

Women's Fund Grant Seeker's Workshop

November 2, 2017

Our Mission

The Women's Fund for the Fox Valley Region invests in women and girls through:

- ▶ Grants
- ▶ Advocacy
- ▶ Education

History of the Women's Fund

- ▶ Established in 1994
- ▶ Awarded first grants in 1997 – 20 years of grantmaking!
- ▶ Became a supporting organization of the Community Foundation in 2005

Where we are now:

- ▶ 58 Named endowment funds within the Women's Fund
- ▶ More than \$1.34 million in grants made to 204 projects by 80 organizations
- ▶ \$2,396,900 in assets
- ▶ Total Philanthropic Impact of \$3,743,700

Grant Projects Funded 2017

32 Preliminary Applications Received

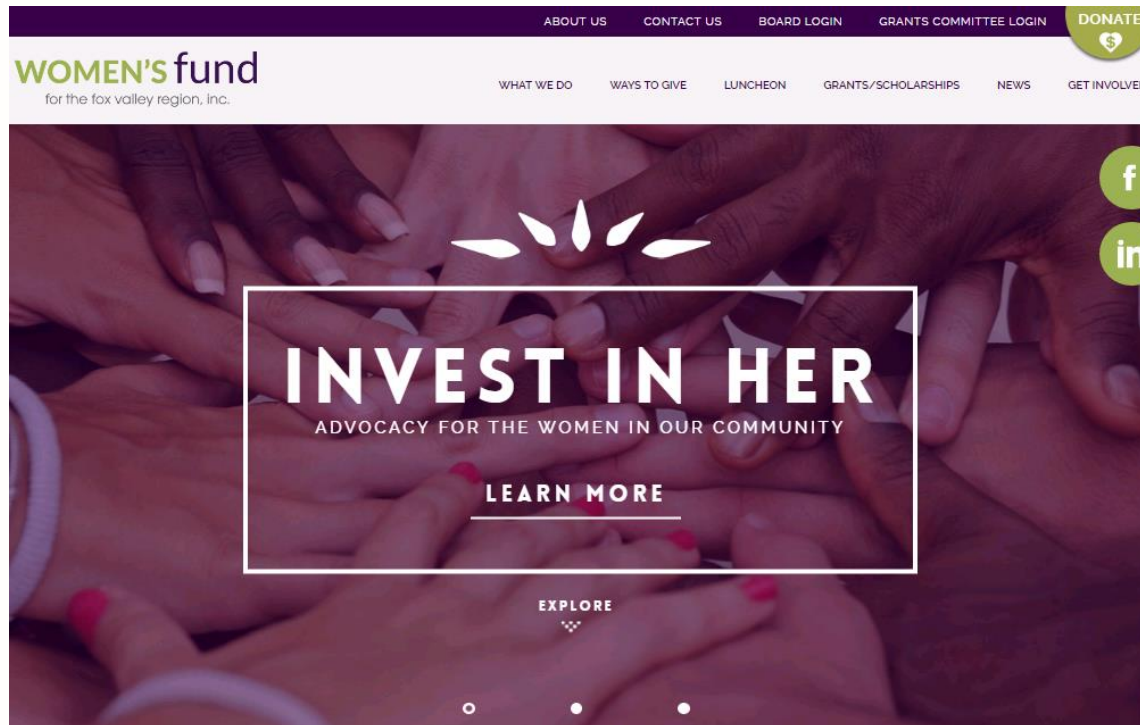


17 Full Proposals Requested



11 Projects Funded

Our website womensfundfvr.org



On our website

- ▶ E-News sign up – Home page
- ▶ Newsletter archives – News page
- ▶ Research Reports – News page
- ▶ Grant applications & guidelines – Grants & Scholarships page

Research

WOMEN'S fund
for the fox valley region, inc.



New! 2017
Status of Women in
Northeast Wisconsin
Report



2015 Status of Women
in the States

invest in her

grants | advocacy | education



- ▶ Benefit Program Enrollment
- ▶ Educational Attainment
- ▶ Free & Reduced-price School Meals
- ▶ Health & Well-being
- ▶ Political Representation
- ▶ Violence Against Women
- ▶ Who is in Poverty
- ▶ Women & Poverty
- ▶ Women in the Population
- ▶ Women, Work & Wages
- ▶ Women's Business Ownership & Corporate Leadership
- ▶ Appendix



- ▶ Who is in Poverty
- ▶ Women & Poverty
- ▶ Educational Attainment

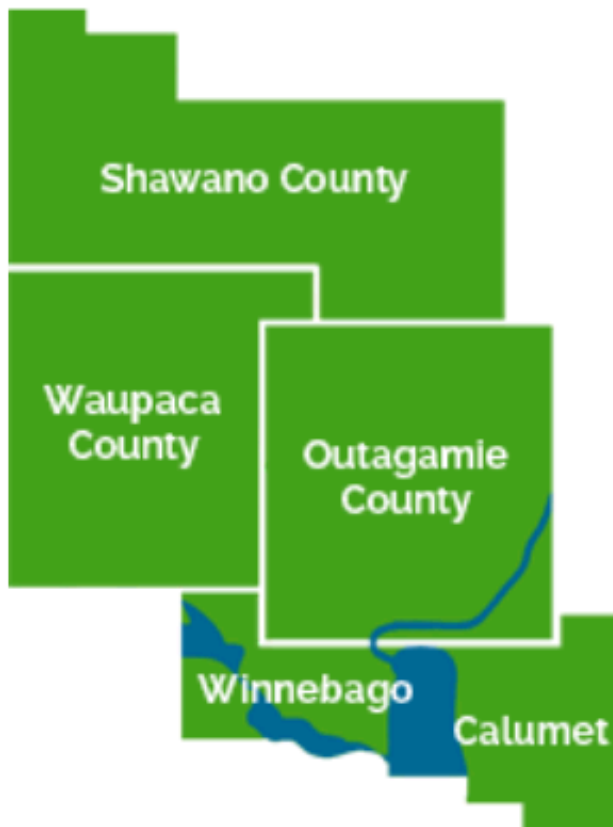
Phases of Planning

- ▶ Understand the problem and your role in the solution.
- ▶ Determine the action you want to take.
- ▶ Engage stakeholders and funders in your action plan.

Grant Guidelines

- ▶ Make sure you meet eligibility requirements.
- ▶ Make sure your organization and/or program align with our funding priorities.
- ▶ Make sure you meet stated deadlines.

Service Area



4 1/2 COUNTY SERVICE REGION

The Women's Fund's service region includes Calumet, Outagamie, Waupaca, Shawano and northern Winnebago counties.

In northeast Wisconsin, there are other Women's Funds located in Green Bay, Door County, Oshkosh and Fond du Lac.

Funding Restrictions

The Women's Fund will not fund:

- ▶ Individuals
- ▶ Endowments
- ▶ Government agencies (educational institutions may qualify)
- ▶ Projects with religious focus
- ▶ Political parties, candidates or partisan activities

Funding Priorities

- ▶ Women and girls live in safety.
- ▶ Women and girls meet their basic needs for living, including food, shelter, and access to health care.
- ▶ Women and girls have the knowledge, opportunity, and self-determination to be economically secure.
- ▶ Women and girls have opportunities to pursue their dreams and achieve their potential.
- ▶ Women and girls are empowered and inspired to:
 - Learn about and experience the value of philanthropy, including volunteerism.
 - Mentor and encourage others.
 - Recognize, develop and apply their leadership skills personally and professionally.

Specific Focus for 2018

▶ **Young Adult Economic Security**

The Women's Fund continues its commitment to our initiative to improve the long-term economic security of young adult women age 18-29. Programs for young adults aging out of youth programs are of particular interest.

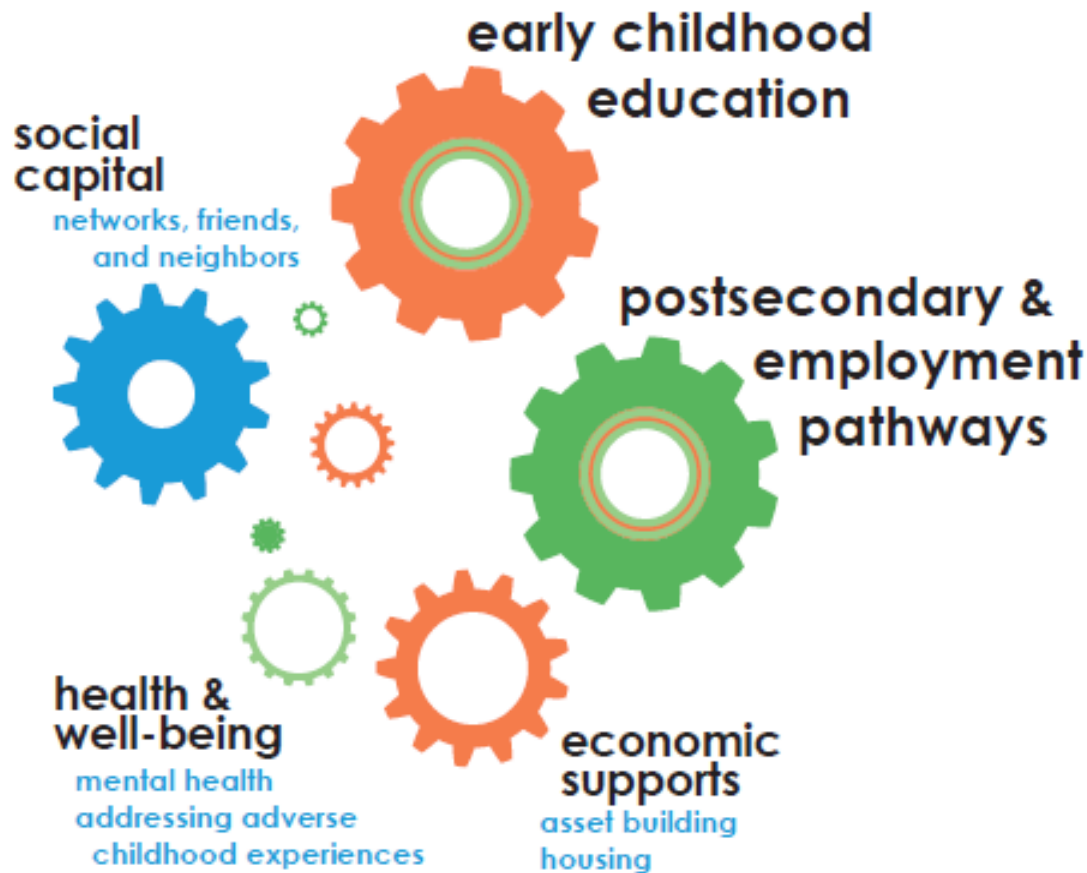
▶ **Two-Generational Family Strengthening**

The Women's Fund is interested in programs which serve families holistically. Organizations are encouraged to apply the Aspen Institute Two-Generational approach to their work.

▶ **Programming to Benefit Females of Any Age**

The Women's Fund wishes to stay informed of the needs of all women and girls in our community. Projects in this category may serve females of any age, in any of the Women's Fund priority areas, with an emphasis on emerging issues or creative solutions to existing needs.

Two-Generation Approach



Preliminary Application

- ▶ More efficient use of everyone's time
- ▶ Focus on what you would do
- ▶ Constructive feedback early in the process
- ▶ Opportunities for collaboration, cooperation, and partnership

All Women's Fund Grants Committee members
will review all the applications.

What does collaboration mean to the Women's Fund?

'Real Collaboration' is authentic working together across organizational boundaries toward common goals.

--LaPiana and Associates

Full Proposal

- ▶ Continued emphasis and what you will do
- ▶ Budget
- ▶ Interviews and site visits
- ▶ Outcomes measurement and evaluation

Small Group Conversations

- ▶ Meet potential collaborators
- ▶ Draft one sentence project description

National Philanthropy Day



Wednesday, November 15 at Lambeau Field

Tom Ahern is considered one of North America's leading authorities on donor communications, he is the author of four well-received books on donor communications, and has two more in the pipeline.

Each year, he delivers dozens of workshops throughout the world on the techniques of (and psychology behind) effective fundraising communications.

Last day to register is this Friday, November 3rd!

Learn more at <http://www.afpnewi.afpnet.org/>.

Questions?

womensfundfvr.org

Becky Boulanger 920.702.7617
bboulanger@womensfundfvr.org